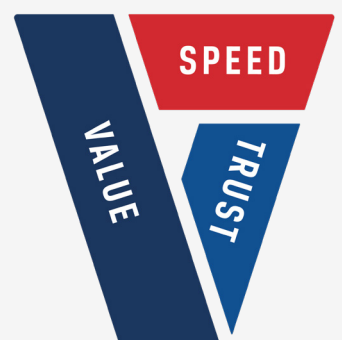




Local Information

*including Hotels, Restaurants, Shopping,
Local Attractions and Car Hire information*

DAIMLER TRUCKS LAVERTON



Contents

Hotels	Page 2
Restaurants	Page 4
Shopping	Page 6
Local Attractions	Page 8
Car Hire Information	Page 9

Hotels

Punthill Caroline Springs

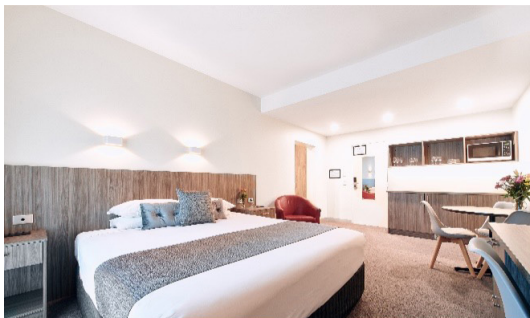
Whether visiting Liverpool for business or pleasure, you will find the Punthill Caroline Springs to be one of the best-equipped hotels in the Liverpool and Melbourne Western area. Enjoy amenities ranging from a well-equipped gym, business centre and, meeting and event spaces to a coffee shop within minutes' walk away. Punthill Caroline Springs is an excellent apartment hotel just a half hours drive west of Melbourne city centre, situated directly on the lake and easily accessible from neighbouring shops, cafés and restaurants.



7 Caroline Springs Blvd, Caroline Springs
Reservations 03 8362 8100
carolinesprings@punthill.com.au

Club Laverton

Club Laverton takes pride in the welfare of its patrons, employees, and the wider community where it operates. It is committed to the provision of all its services with due responsibility and sustainability to provide our patrons with information on options, including rational and sensible choices that they can make under their own circumstances. For the best lunch & dinner options near you, our bistro menu provides a variety of delicious traditional local pub food and drinks, while simultaneously offering premium accommodation and function rooms for any event.



15 Aviation Road, Laverton
Reservations 03 9369 1811
reservations@clublaverton.com.au

Quest Caroline Springs

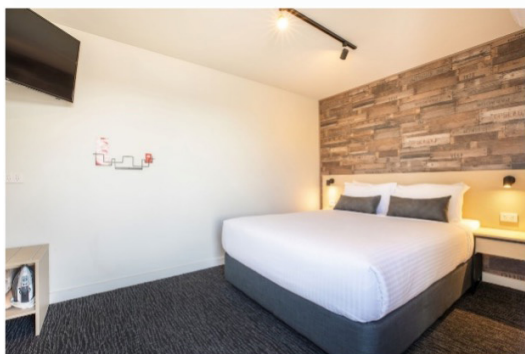
You're selecting comfort, convenience, and extraordinary customer service when you decide to stay at Quest Caroline Springs. It's located at CS Square, and you can easily reach all of your needs in terms of facilities, shopping or entertainment. It's an ideal place to take short and long-term holidays as well as business trips with CBD only 20 minutes away. The kids will be delighted because there's a few minutes of Kororoit Creek, and the Boathouse playground is close by. Book Today!



234 Caroline Springs Blvd, Caroline Spring
Reservations 03 8361 3888
questcarolinesprings@questapartments.com.au

Nightcap at Westside Hotel

A favourite amongst locals and visitors to Laverton, Westside Hotel caters to all members of the family, with a kid's playground and PlayStations, and billiards and TVs with live sports for the adults. After a day of playing hard (or not), sink into your premium King Koil bed featured in each of our contemporary rooms. Like all Nightcap Hotels, we offer an on-site bistro, bar and bottle shop, and all rooms feature free Wi-Fi, a flat-screen TV, refrigerator, desk, heating, air-conditioning, and tea/coffee making facilities.



Cnr Fitzgerald & Leakes Road, Laverton
Reservations 03 9360 3700
westsidehotel@nightcaphotels.com.au

As a valued customer of Daimler Trucks Laverton, we are offering free transportation to your choice of the hotels in the booklet.

Please see reception to organise transport.

Restaurants

There is a large array of local restaurants/cafes in the surrounding area.
Transportation available on request - see reception to organise (subject to availability).

Lazy Moe's

1042 Western Highway, Caroline Springs
(03) 8390 4924
lazymoes.com.au

Restaurant
Dine-in • Takeaway

Monday	8:30am - 10:30pm
Tuesday	8:30am - 10:30pm
Wednesday	8:30am - 10:30pm
Thursday	8:30am - 10:30pm
Friday	8:30am - 11:00pm
Saturday	8:30am - 11:00pm
Sunday	8:30am - 10:00pm

Urban Eatery

375 Boundary Road, Truganina
(03) 9000 5751
urbaneaterytruganina.com.au

Cafe - Restaurant
Dine-in • Takeaway • Pickup

Monday	5:00am - 3:00pm
Tuesday	5:00am - 3:00pm
Wednesday	5:00am - 3:00pm
Thursday	5:00am - 3:00pm
Friday	5:00am - 3:00pm
Saturday	Closed
Sunday	Closed

Landing Point Woodfired Pizza

101 Overton Road, Williams Landing
(03) 8360 3328
landingpoint.com.au

Restaurant - Bar

Monday	9:00am - 10:00pm
Tuesday	9:00am - 10:00pm
Wednesday	9:00am - 10:00pm
Thursday	9:00am - 10:00pm
Friday	9:00am - 11:00pm
Saturday	9:00am - 11:00pm
Sunday	9:00am - 10:00pm

Pattysmiths

1-7 Caroline Springs Boulevard, Caroline Springs
(03) 8382 1497
pattysmiths.com.au

Hamburger Restaurant
Dine-in • Takeaway • Delivery

Monday	11:00am - 9:00pm
Tuesday	11:00am - 9:00pm
Wednesday	11:00am - 9:00pm
Thursday	11:00am - 9:00pm
Friday	11:00am - 11:00pm
Saturday	11:00am - 11:00pm
Sunday	11:00am - 9:00pm

Shopping

Pacific Werribee

Cnr Derrimut Road & Heaths Road, Hoppers Crossings
(03) 9749 5111

Monday	9:00am - 5:30pm
Tuesday	9:00am - 5:30pm
Wednesday	9:00am - 5:30pm
Thursday	9:00am - 9:00pm
Friday	9:00am - 9:00pm
Saturday	9:00am - 5:00pm
Sunday	10:00am - 5:00pm

Tarneit Central Shopping Centre

540 Derrimut Road, Tarneit
(03) 8391 4499

Monday	9:00am - 5:30pm
Tuesday	9:00am - 5:30pm
Wednesday	9:00am - 5:30pm
Thursday	9:00am - 9:00pm
Friday	9:00am - 9:00pm
Saturday	9:00am - 5:00pm
Sunday	10:00am - 5:00pm

Springlake Shopping Centre

1/7 Caroline Springs Boulevard, Caroline Springs
1300 964 821

Monday	7:30am - 8:30pm
Tuesday	7:30am - 8:30pm
Wednesday	7:30am - 8:30pm
Thursday	7:30am - 8:30pm
Friday	7:30am - 8:30pm
Saturday	7:30am - 8:30pm
Sunday	8:30am - 8:30pm

Local Attractions

Melbourne Skydeck

7 Riverside Quay, Southbank
(03) 9693 8888

Open weekdays 12:00pm - 9:00pm

Featuring the Southern Hemisphere's highest observation deck, the Melbourne Skydeck experience dazzles, entertains and informs through its spectacular and ever-changing views, state-of-the-art virtual and augmented reality technology, and Melbourne Skydeck App.

The 100 Steps of Federation

Andrew Park Drive, Altona Meadows
(03) 9932 1000

Open 24 hours

"Time Beacon presents a positive and dynamic image for the future intently listening to the land, and relaying what is heard. It expresses a meeting of nature and culture of the past, present, and future. Its shape reflects magnetic fields, exploding stars, whirlpools of nature, radio dishes, audio speakers, and listening and projecting devices of the manufactured world." Cameron Robbins say (Artist)

Werribee Park Mansion

Gate 2, K Road, Werribee South
(03) 8427 2134

Monday to Friday 10:00am - 4:00pm Saturday & Sunday 10:00am - 5:00pm

With its location in a few minutes from the terminals at Melbourne International Airport and less than 5 km from the central business district, URBNSURF Melbourne is Australia's First Urban Surf Park which offers an experience to guests of all ages and abilities. Within the park's crystal-clear surfing lagoon (similar in size to the MCG), up to 600 perfect, ocean-like surfing waves are created every hour - from gentle, rolling whitewater waves for learners and beginners, through to steep, barrelling waves that will challenge even the most experienced surfers.

Car Hire

If you require a car while your vehicle is being repaired,
there are car hire companies nearby.

Europcar A & G Replacement Site

105 William Angliss Drive, Laverton North
0439 500 620
europcar.com.au

Monday	8:00am - 5:00pm
Tuesday	8:00am - 5:00pm
Wednesday	8:00am - 5:00pm
Thursday	8:00am - 5:00pm
Friday	8:00am - 5:00pm
Saturday	8:00am - 12:00pm
Sunday	9:00am - 1:00pm

Thank you for visiting Daimler Trucks Laverton

We hope to see you again soon

